



# chassis truck weighing



appsheet



S

X

## WEIGHING AND LOADING DATA MANAGEMENT DEVICE INSTALLED ON BOARD

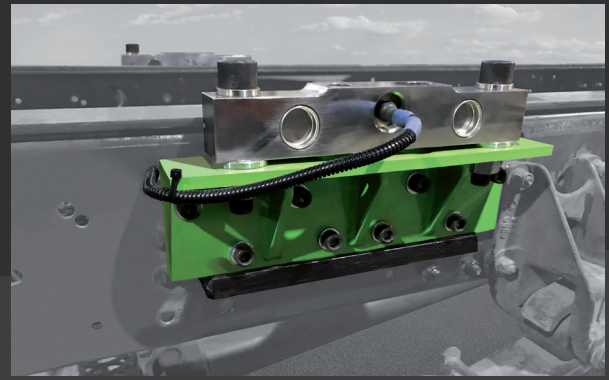
The Device is perfectly positioned in the cabin to give you the best view of its display and operability in choosing the data you want to enter before starting the load. Its swivel mount allows you to direct the Device as you wish.

## LOAD CELL INSTALLED IN BETWEEN THE FRAME AND SUB-FRAME

The load cells are installed between the chassis of the truck and that of the equipment that mounts the truck, body, flatbed, compactor or any other. With special sturdy supports the load cells are exactly positioned at the same level to eliminate the torsions that would otherwise be created during loading.

Depending on the length and number of axles, an adequate number of load cells is installed to ensure safety and no torsions, distributed along the frame in equal quantities on the right and left side. The load cells have been designed to withstand a very high breaking load ensuring the robustness of their use.

The degree of protection ensures operation at the most extreme temperatures and environmental conditions. The characteristics of its cable and its protection have been chosen for the work environment where substances derived from oil or salt will not damage them.



### specifications

	<b>S</b>	<b>X</b>
power supply	9÷36Vdc	9÷36Vdc
working temperature	-40÷+80°C	-40÷+80°C
shocks	40G	40G
device/sensors protection	IP54/IP67	IP54/IP67
size	140x204x67	140x204x67
display	HD color	HD color
maximum capacity (kg)	80000	80000
measurement error	1%	1%
legal for trade	yes	yes

### data management

	<b>S</b>	<b>X</b>
production monitoring (products)	30	300
recipes/blending management	5	150
multi-tasking (simultaneous loads)	10	25
loadout full data management	very small	large
job orders reception		yes
cloud connection	USB-wireless	USB-wireless
loading file download (.csv)	yes	yes

\*see products datasheet for complete details