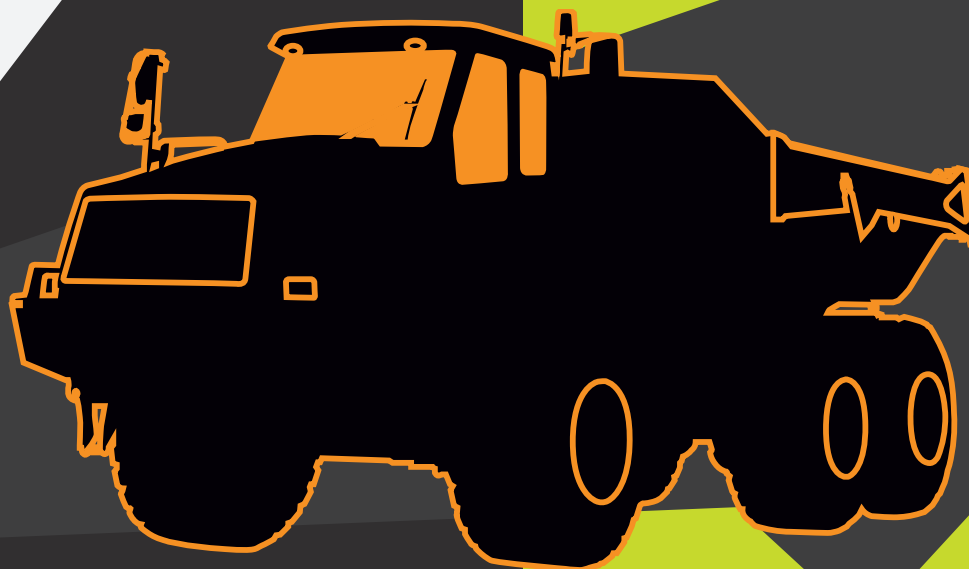




articulated dump truck



appsheet



5

WEIGHING AND LOADING DATA MANAGEMENT DEVICE INSTALLED ON BOARD

The Device is perfectly positioned in the cabin to give you the best view of its display and operability in choosing the data you want to enter before starting the load. Its swivel mount allows you to direct the Device as you wish.

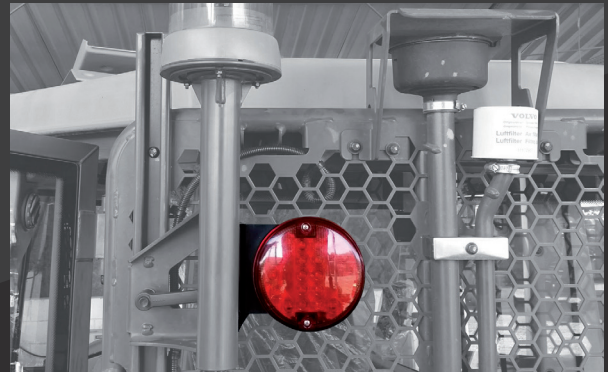
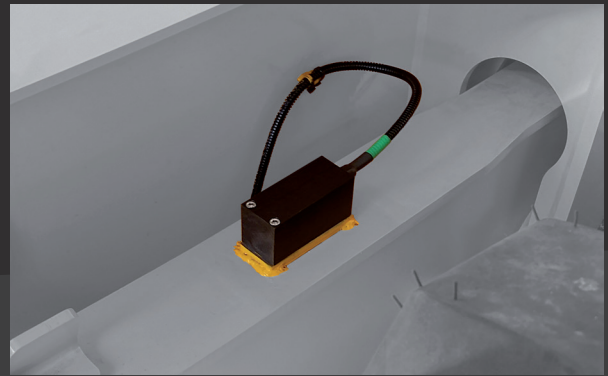


STRAIN SENSOR TO DETERMINE WALKING BEAM BENDING DUE TO LOAD

The strain sensor called LOADLINK3 is installed on the walking beam placed between the rear axles on the right and on the left. This walking beam undergoes the bending due to the load and the LOADLINK3 measures it being integral with it.

EXTERNAL LIGHT FOR MAXIMUM CAPACITY WARNING

This LED light is installed outside the cabin to alert the loading machine when the maximum capacity is about to be reached. With an intermittent flashing which increases when the set threshold is approaching, it proves to be useful for the load phases where compliance with the capacity of the vehicle represents a decrease in maintenance costs. Up to 3 lights can be installed to compensate for the different loading positions that the machine can take, right, left or back.



specifications

S

power supply	9÷36Vdc
working temperature	-40÷+80°C
shocks	40G
device/sensors protection	IP54/IP67
size	140x204x67
display	HD color
maximum capacity (kg)	
measurement error	3%
legal for trade	no

data management

S

production monitoring (products)	30
tons/hour	yes
# of daily trips	yes
destinations	20
daily total	yes
cloud connection	USB-wireless
loading file download (.csv)	yes

*see products datasheet for complete details